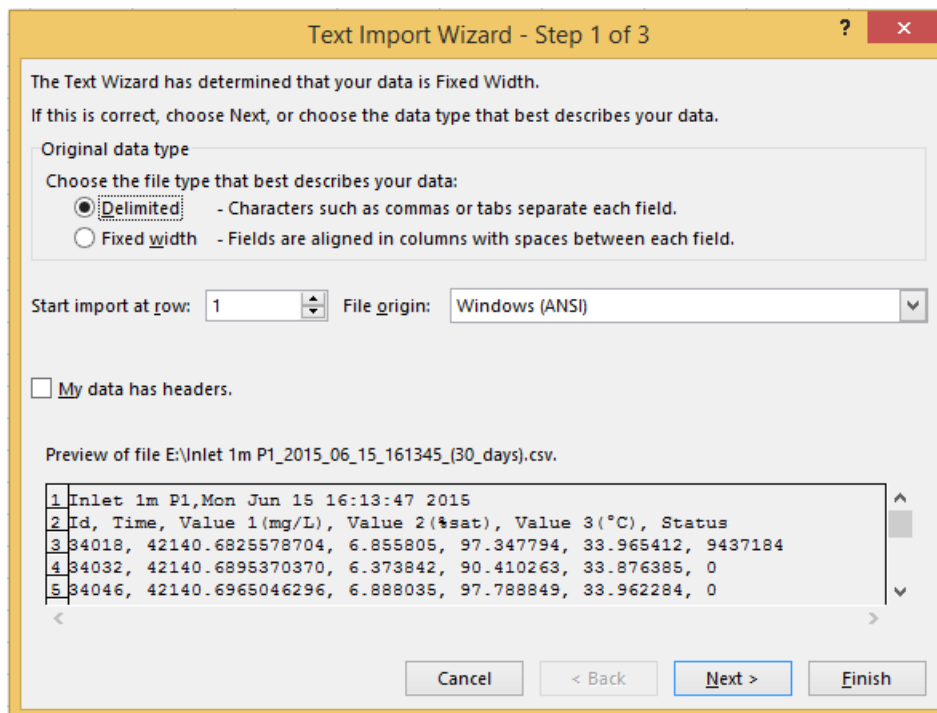
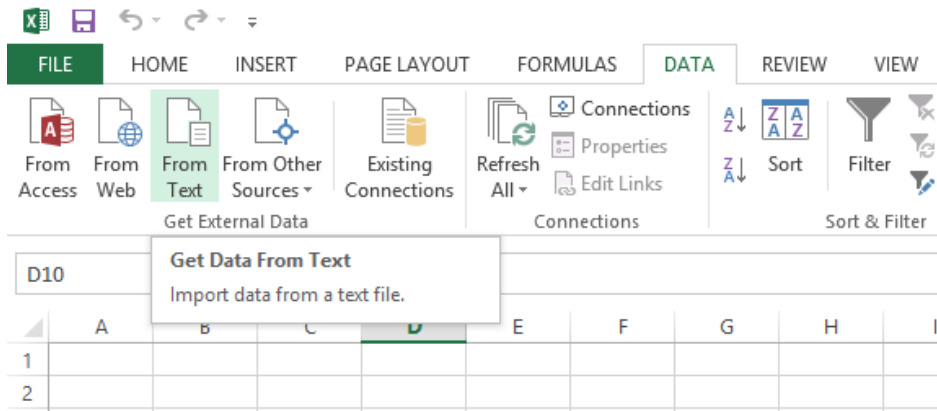


Importing Pacific CSV

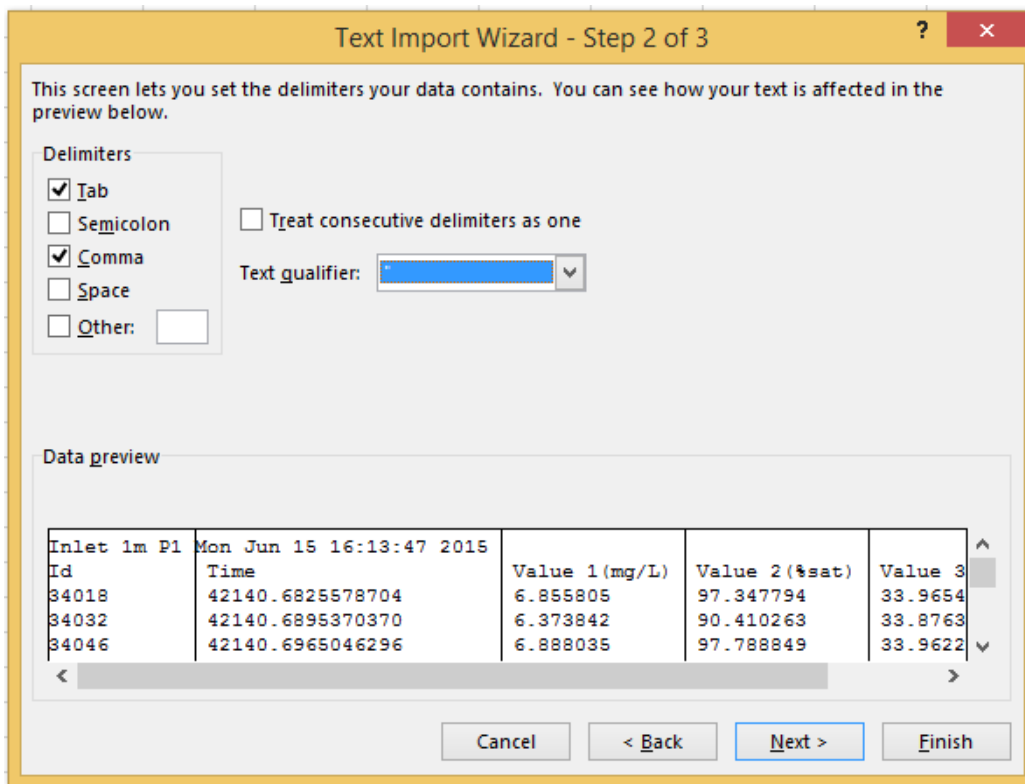
Shown in Excel 2013.

Choose “From Text” in the DATA tab.



Choose Windows (ANSI) in File origin.

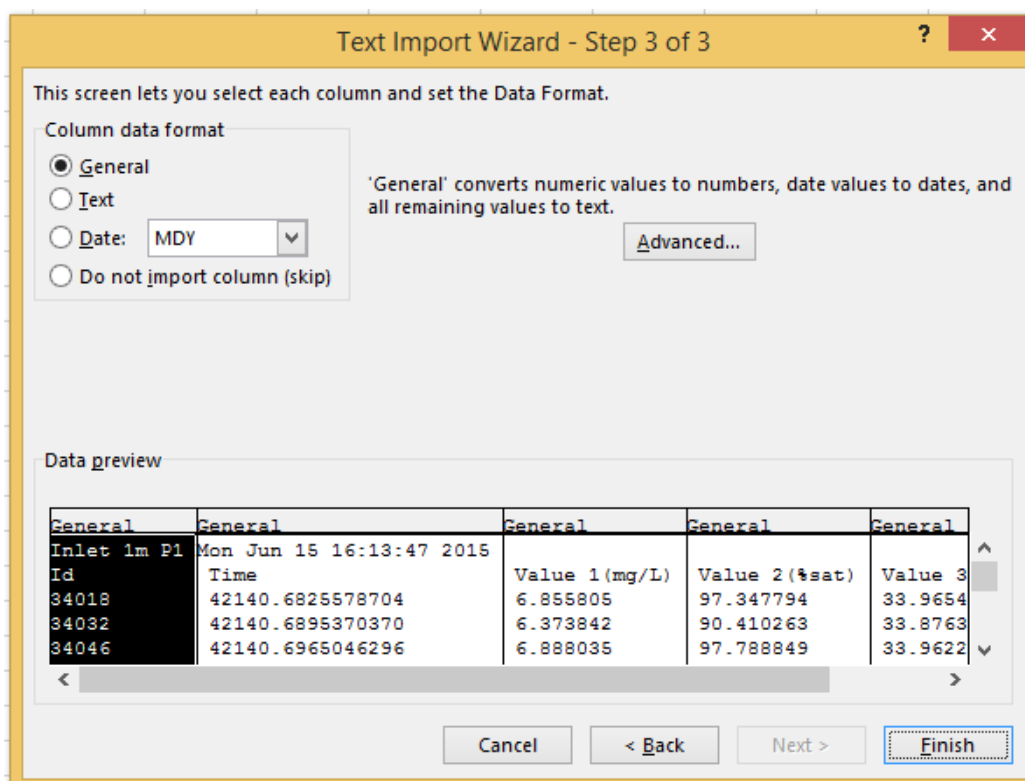
Press Next.



Choose Comma as a delimiter.

Press Next.

Choose Advanced.



Text Import Wizard - Step 3 of 3

This screen lets you select each column and set the Data Format.

Column data format

General
 Text
 Date: MDY
 Do not import column (skip)

'General' converts numeric values to numbers, date values to dates, and all remaining values to text.

Advanced...

Data preview

General	General	General	General	General
Inlet 1m P1	Mon Jun 15 16:13:47 2015			
Id	Time	Value 1 (mg/L)	Value 2 (%sat)	Value 3
34018	42140.6825578704	6.855805	97.347794	33.9654
34032	42140.6895370370	6.373842	90.410263	33.8763
34046	42140.6965046296	6.888035	97.788849	33.9622

Cancel < Back Next > Finish

Advanced Text Import Settings

Settings used to recognize numeric data

Decimal separator: .

Thousands separator: @

Note: Numbers will be displayed using the numeric settings specified in the Regional Settings control panel.

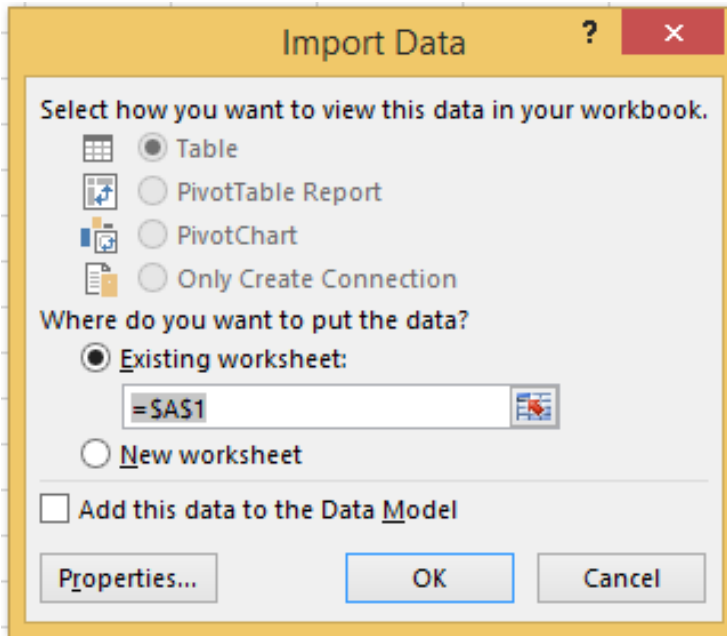
Reset Trailing minus for negative numbers

OK Cancel

Choose dot (.) as a decimal separator.

Choose an at-sign (@) as a thousands separator.

Press OK and Finish.

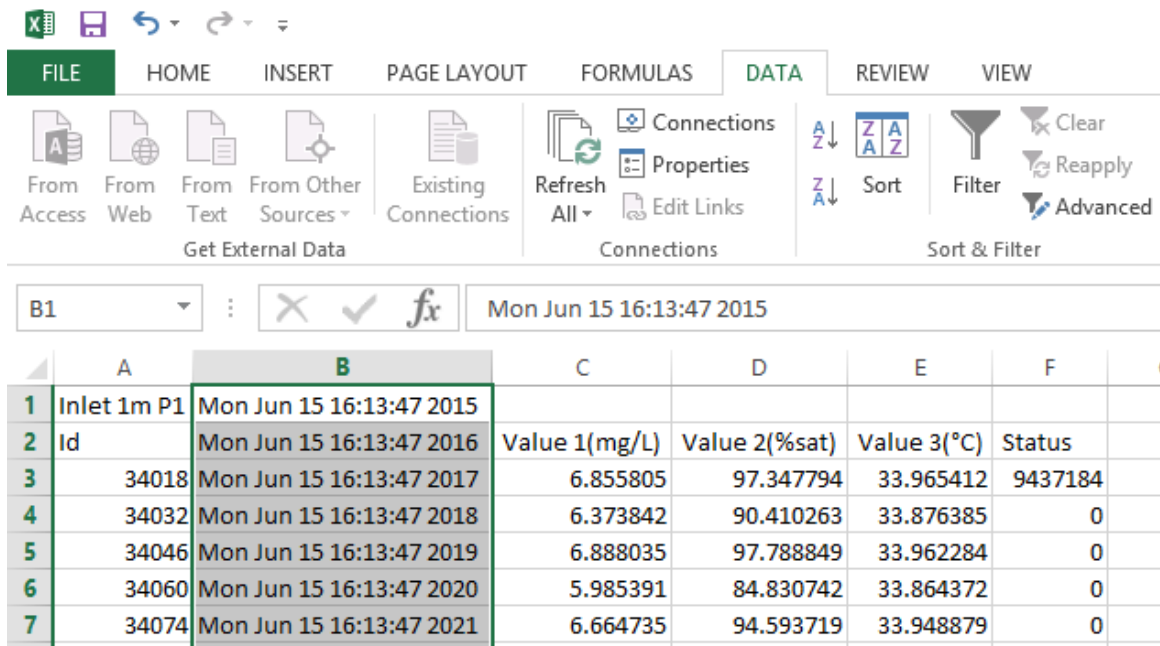


Choose where data should be placed. For example highest cell on the left =SAS1.

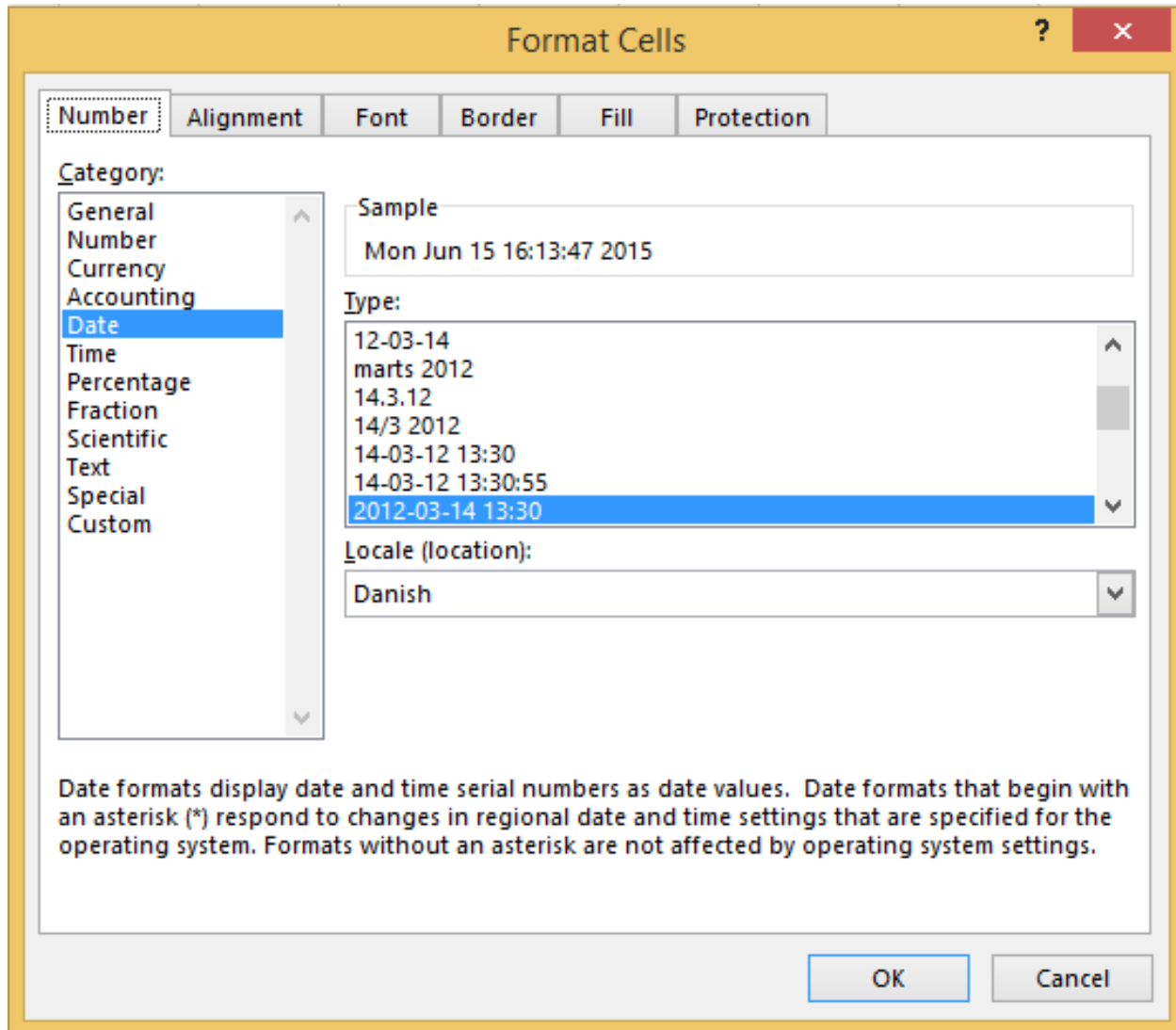
Press OK.

Select cells with dates and right click on selection.

Choose Format cells.



	A	B	C	D	E	F	C
1	Inlet 1m P1	Mon Jun 15 16:13:47 2015					
2	Id	Mon Jun 15 16:13:47 2016	Value 1(mg/L)	Value 2(%sat)	Value 3(°C)	Status	
3	34018	Mon Jun 15 16:13:47 2017	6.855805	97.347794	33.965412	9437184	
4	34032	Mon Jun 15 16:13:47 2018	6.373842	90.410263	33.876385	0	
5	34046	Mon Jun 15 16:13:47 2019	6.888035	97.788849	33.962284	0	
6	34060	Mon Jun 15 16:13:47 2020	5.985391	84.830742	33.864372	0	
7	34074	Mon Jun 15 16:13:47 2021	6.664735	94.593719	33.948879	0	



Choose Date and format of your preference.

Press OK.

Microsoft Excel ribbon: FILE, HOME, INSERT, PAGE LAYOUT, FORMULAS, DATA, REVIEW, VIEW

DATA ribbon options: From Access, From Web, From Text, From Other Sources, Existing Connections, Refresh All, Connections, Properties, Edit Links, Sort, Filter, Clear, Reapply, Advanced

Formula bar: K23, fx

	A	B	C	D	E	F
1	Inlet 1m P1	Mon Jun 15 16:13:47 2015				
2	Id	Mon Jun 15 16:13:47 2016	Value 1(mg/L)	Value 2(%sat)	Value 3(°C)	Status
3	34018	Mon Jun 15 16:13:47 2017	6.855805	97.347794	33.965412	9437184
4	34032	Mon Jun 15 16:13:47 2018	6.373842	90.410263	33.876385	0
5	34046	Mon Jun 15 16:13:47 2019	6.888035	97.788849	33.962284	0
6	34060	Mon Jun 15 16:13:47 2020	5.985391	84.830742	33.864372	0
7	34074	Mon Jun 15 16:13:47 2021	6.664735	94.593719	33.948879	0
8	34088	Mon Jun 15 16:13:47 2022	6.079814	86.122536	33.84634	0
9	34102	Mon Jun 15 16:13:47 2023	6.150851	87.050354	33.780308	0
10	34116	Mon Jun 15 16:13:47 2024	6.313683	89.375771	33.783154	0
11	34130	Mon Jun 15 16:13:47 2025	6.181621	87.500008	33.777225	0
12	34144	Mon Jun 15 16:13:47 2026	6.752677	95.596344	33.79781	0
13	34158	Mon Jun 15 16:13:47 2027	7.310628	103.476913	33.789352	0
14	34172	Mon Jun 15 16:13:47 2028	6.887757	97.487282	33.783966	0
15	34186	Mon Jun 15 16:13:47 2029	7.095378	100.423943	33.792263	0
16	34200	Mon Jun 15 16:13:47 2030	6.880111	97.345215	33.780853	0
17	34214	Mon Jun 15 16:13:47 2031	5.609885	79.315239	33.741486	0
18	34228	Mon Jun 15 16:13:47 2032	6.170407	87.175537	33.716892	0
19	34242	Mon Jun 15 16:13:47 2033	6.316505	89.197853	33.689789	0

The result.